



Prime Williamsburg Retail Opportunity

Fully Built Out Cafe & Lounge
All Uses Considered
Gas & Venting Already in Place

RENT:

Upon Request

APPROXIMATE SIZE:

4,000 SqFt - Ground Floor
 715 SqFt - Mezzanine

FRONTAGE:

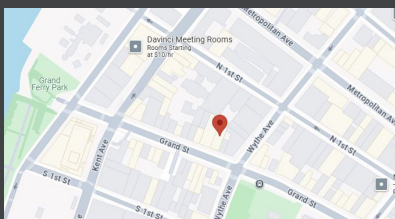
35' on Grand Street

CEILING HEIGHT:

18'

POSSESSION:

Arranged



Notable Neighbors:

Steps from Domino Park Waterfront

Music Hall of Williamsburg

Birkenstock Brooklyn

Levain Bakery

MUJI Williamsburg

Domino Square Park

Trader Joe's

Other Half Brewing

Blue Bottle Coffee

Jack's Wife Freda

Whole Foods

Nitehawk Cinema

Brooklyn Harvest

Apple Store Williamsburg

Gotham Dispensary

For inquiries contact Zach Levine: 646.943.3125 / Zach@iconrealtymgmt.com

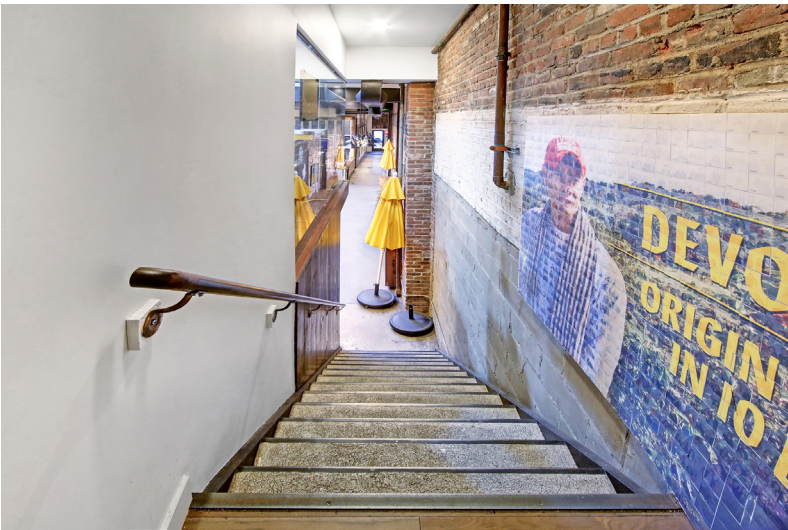
69 Grand Street

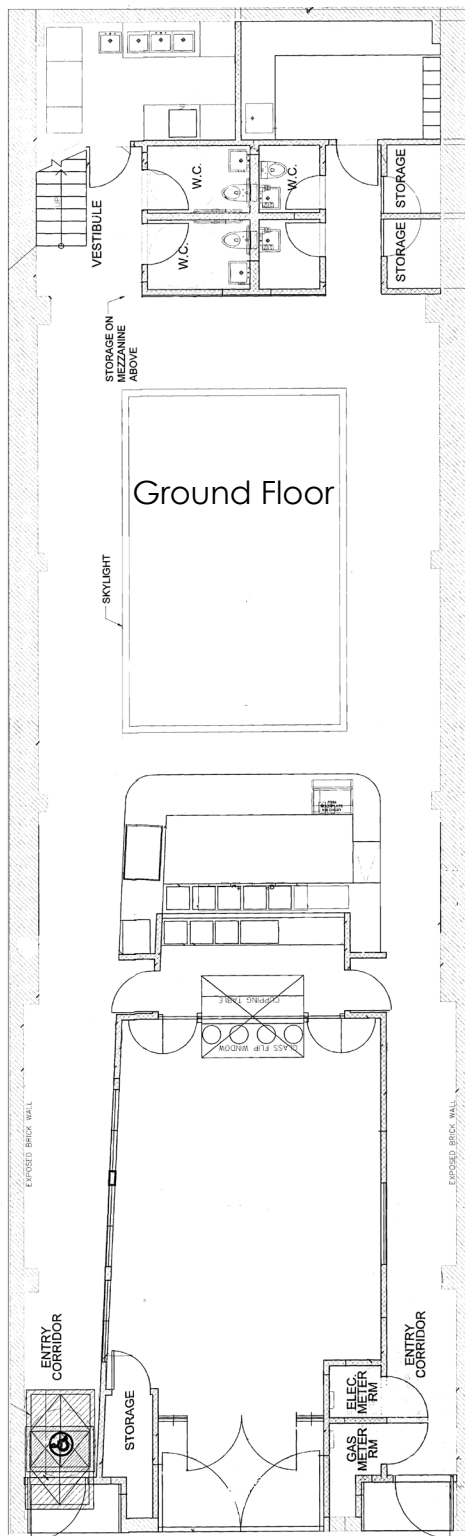
Williamsburg, BK

www.IconRealtyMgmt.com









Grand Street

