



Prime Upper West Side Retail Opportunity

Available Immediately

All Uses Considered

Gas & Venting Already in Place

This Space Can be Divided

#### RENT:

Upon Request

#### APPROXIMATE SIZE:

3,450 SF - Ground Floor

3,450 SF - Basement

#### FRONTAGE:

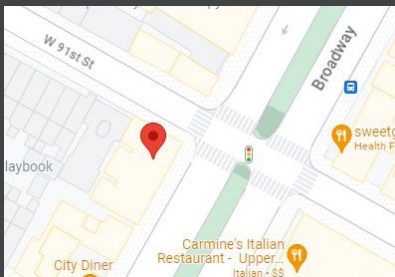
80' on Broadway

#### CEILING HEIGHT:

10'

#### POSSESSION:

Arranged



Notable Neighbors:

**Gyu Kaku**

Blank Street Coffee

Sweetgreen

Petco

City Diner

Ollie's To Go

Key Food

Murray's Sturgeon

Joe and the Juice

Blue Bottle Coffee

Dagon

Carmine's

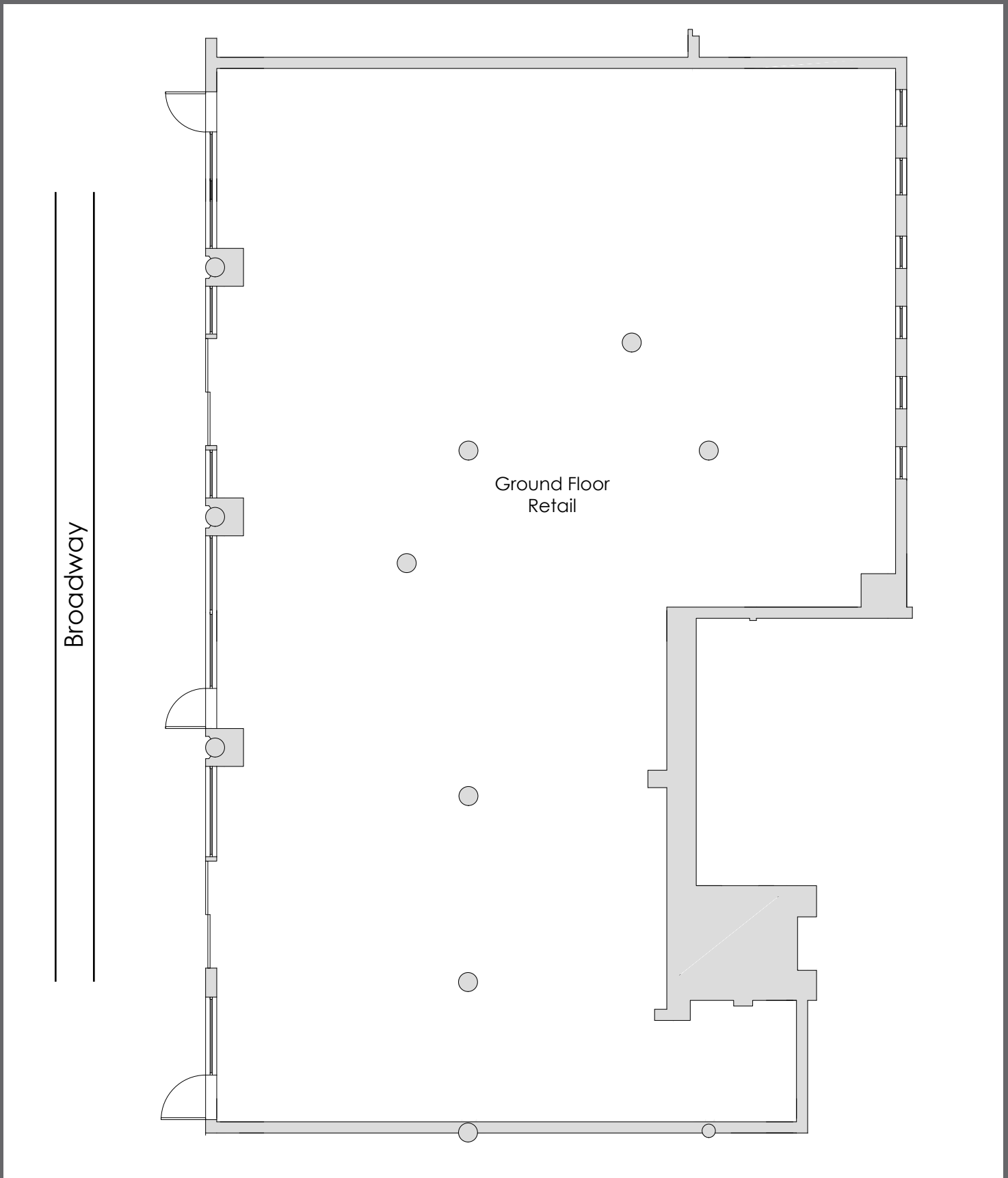
Chase Bank

Frame Cafe

By the Way Bakery

Starbucks

For inquiries contact Zach Levine: 646.943.3125 / Zach@iconrealtymgmt.com





Broadway

