



Prime Boerum Hill Commercial Opportunity

Venting Already in Place

APPROXIMATE SIZE:

400 Sqft - Ground Floor

RENT:

\$6,000 per month

CEILING HEIGHT:

Ground Floor - 10' 9"

FRONTAGE:

14' on Bergen Street

POSSESSION:

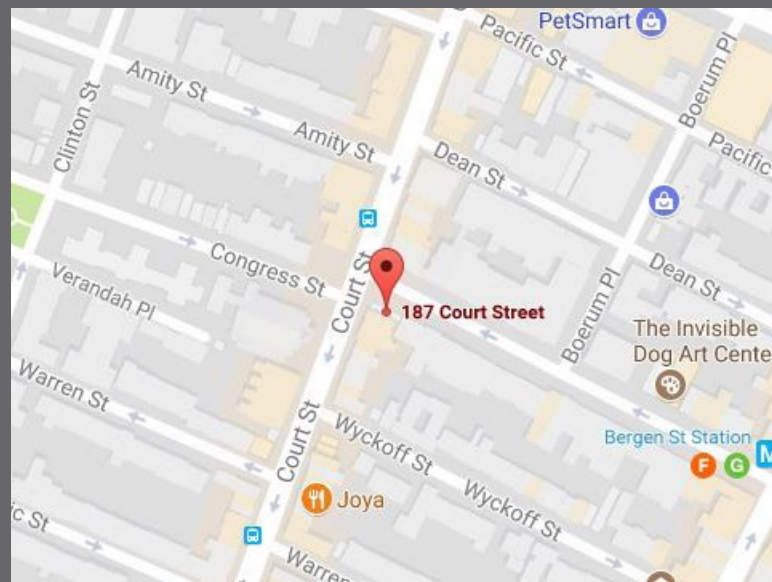
Immediate

NOTES:

All Uses Accepted. Perfect for Restaurant or general retail use

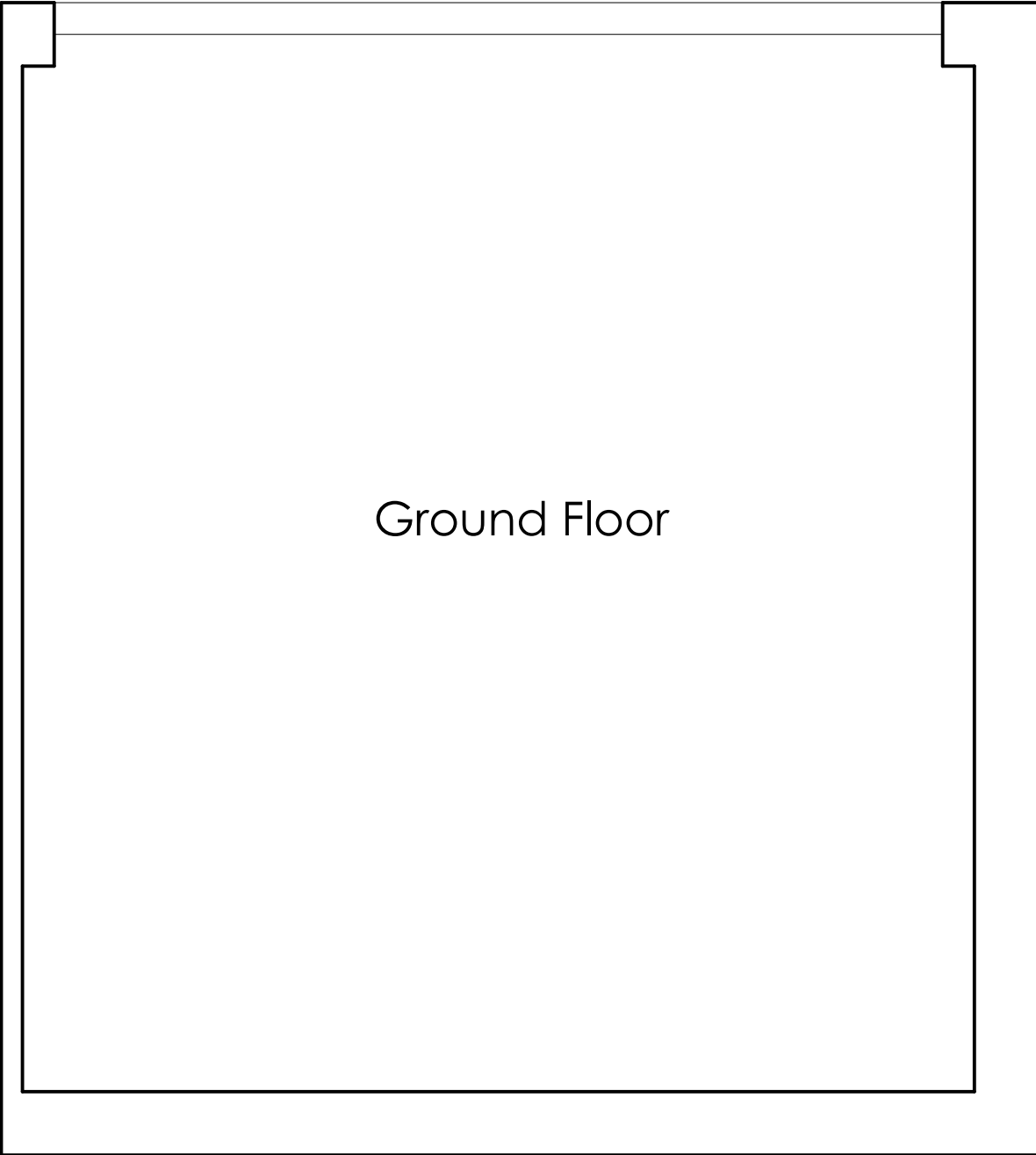
TERM:

Negotiable



For inquiries contact
Zach Levine 646.943.3125

BERGEN STREET



Ground Floor