



Prime Chelsea Retail Opportunity

**Now Offering: 12 Months of TI (\$162,000)
AND 6 Months of Free Rent
AND Full Commission Paid at Lease Signing
Landlord will Pay for Venting for Food Use**

APPROXIMATE SIZE:

2,200 SqFt - Ground Floor
1,000 SqFt - Basement

RENT:

\$13,500 per month

FRONTAGE:

17' 8" on West 25th

CEILING HEIGHT:

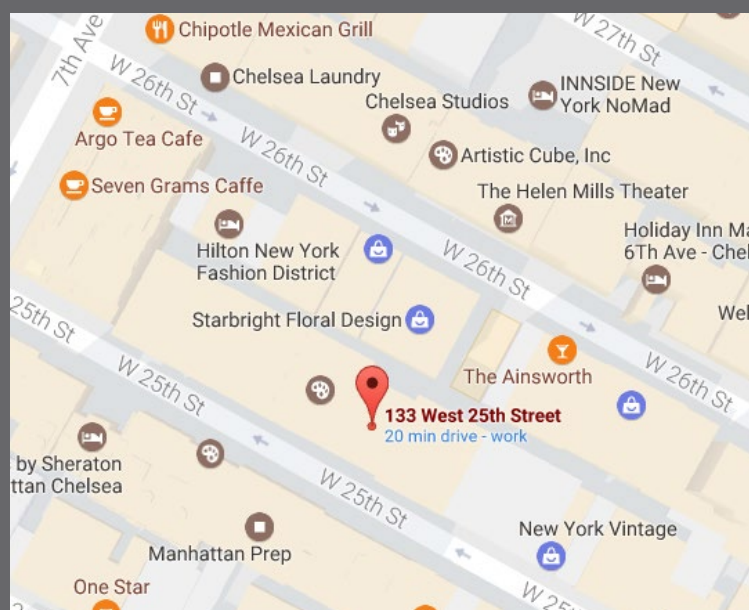
Ground Floor - 10' 8"
Basement - 8' 7"

USE:

All uses accepted

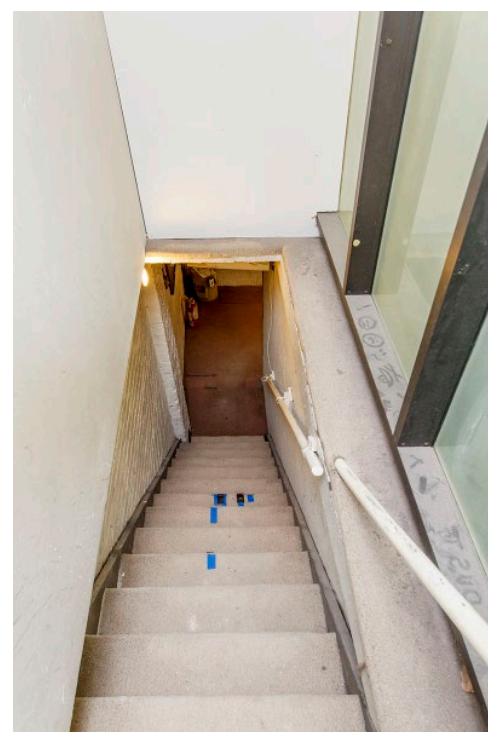
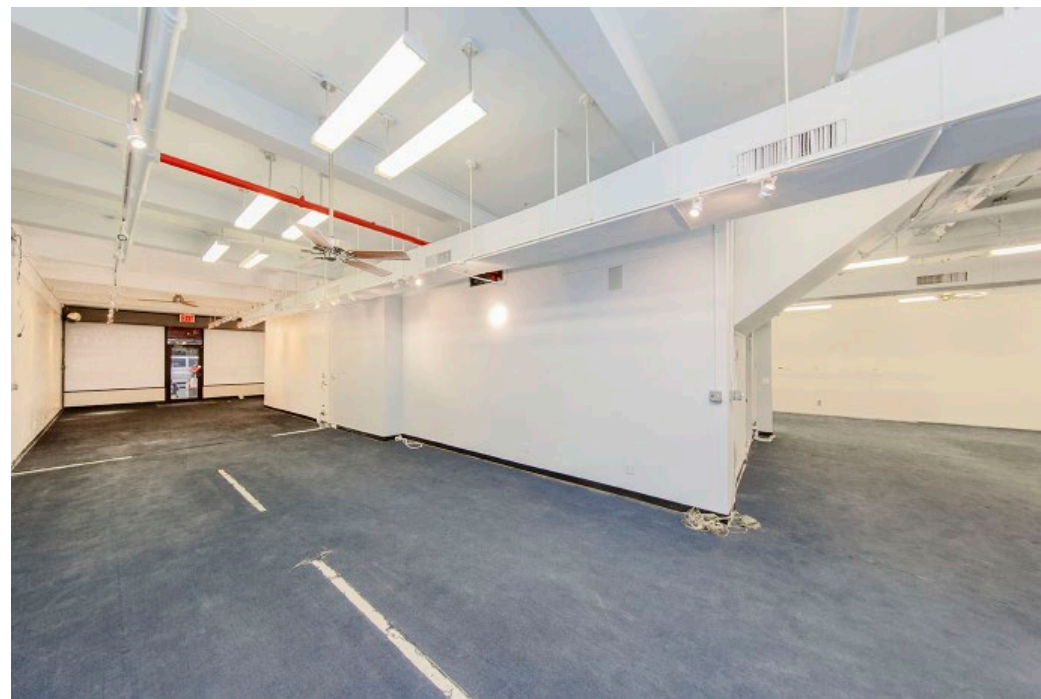
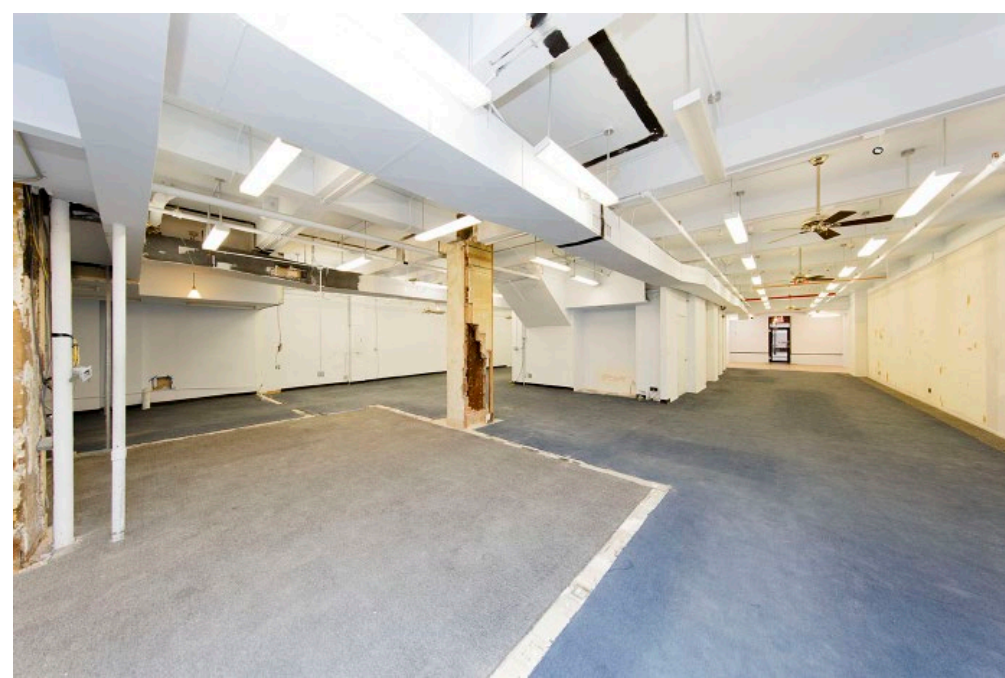
NOTES:

- **Can be combined with Western Retail Space for 4,400SF total**
- **Space can be Vented**



Located Between 6th and 7th Avenue, 133 West 25th offers access to one of New York's most competitively sought after locations.

For inquiries contact Zach Levine 646.943.3125



Basement

