



# 320 West 14<sup>th</sup> Street

Chelsea

Located on 14th and Between 8<sup>th</sup> Avenue and 9<sup>th</sup> Avenue

[www.iconrealtymgmt.com](http://www.iconrealtymgmt.com)



For more information please contact:

**Icon Realty Mgmt**

[rentals@icongroupnyc.com](mailto:rentals@icongroupnyc.com)

**212-661-2700**

**APPROXIMATE SIZE:**

1,300 Sf- Ground Floor  
500 Sf- Garden  
1,500 Sf- Bsmt

**RENT:**

Upon Request

**CEILING HEIGHT**

Ground Floor - 11ft

**FRONTAGE:**

20 Ft on 14<sup>th</sup> Street

**TERM**

Negotiable

**POSSESSION**

Immediate

**COMMENT**

Prime Meatpacking Retail  
Outstanding Foot Traffic on 14 Street





# 320 West 14<sup>th</sup> Street

Chelsea

Located on 14th and Between 8<sup>th</sup> Avenue and 9<sup>th</sup> Avenue

[www.iconrealtymgmt.com](http://www.iconrealtymgmt.com)

---

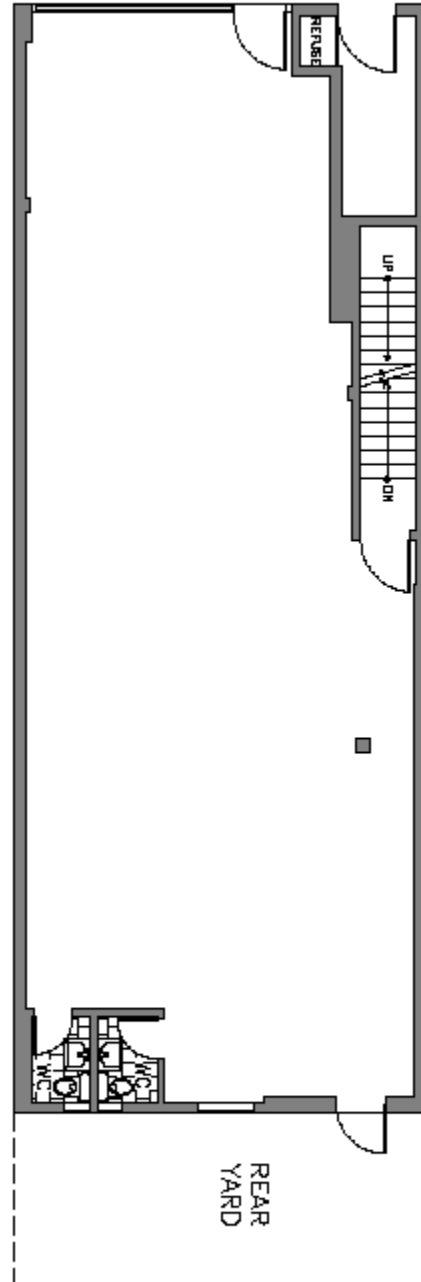


# 320 West 14<sup>th</sup> Street

Chelsea

Located on 14th and Between 8<sup>th</sup> Avenue and 9<sup>th</sup> Avenue

[www.iconrealtymgmt.com](http://www.iconrealtymgmt.com)



320 W 14th STREET  
RETAIL

ICON REALTY MANAGEMENT LLC  
212.675.7100

