



Prime Lower East Side Commercial Opportunity

Available Immediately

Offering 6 Months T.I. (\$72,000) AND 6 Months Free

All Uses Considered

Landlord to Install Venting for Food Use

APPROXIMATE SIZE:

1,000 Sqft - Ground Floor
1,000 Sqft - Basement

RENT:

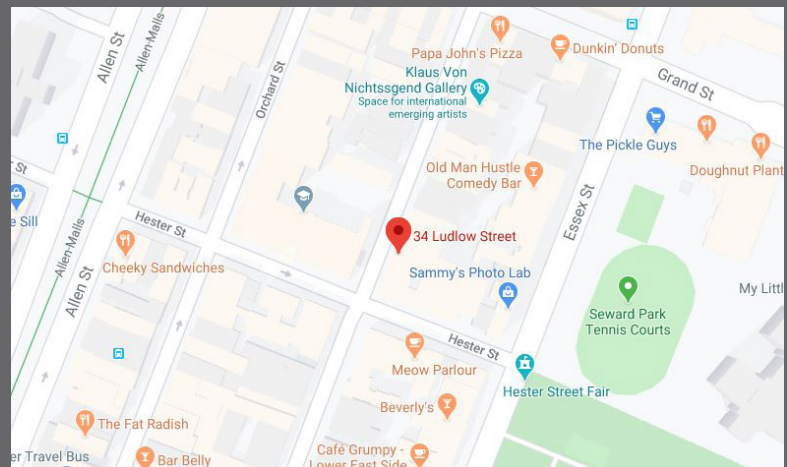
\$12,000 per month

POSSESSION:

Immediate

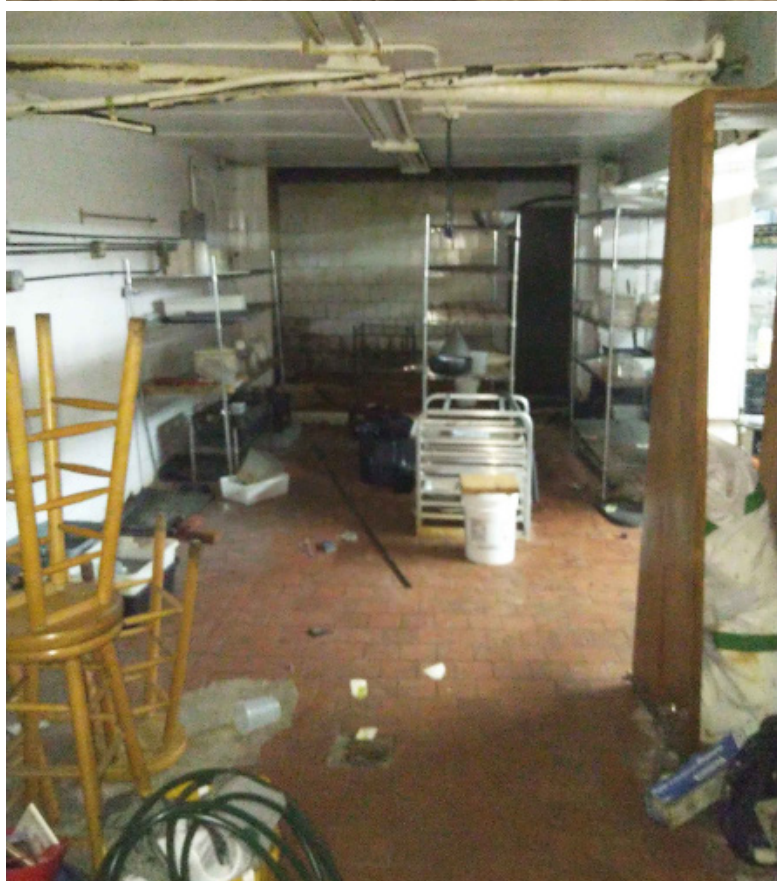
USE:

All retail uses accepted



Located on the corner of Ludlow Street and Hester Street in the Lower East Side, offers access to one of New York's most competitively sought after commercial locations.

For inquiries contact Zach Levine 646.943.3125



Ground Floor

Openings can be made along this wall to combine spaces

Basement

HATCH TO HESTER STREET

