



### Prime Lower East Side Commercial Opportunity

## All Uses Considered

#### APPROXIMATE SIZE:

#### RENT:

800 Sqft - Ground Floor  
450 Sqft - Basement

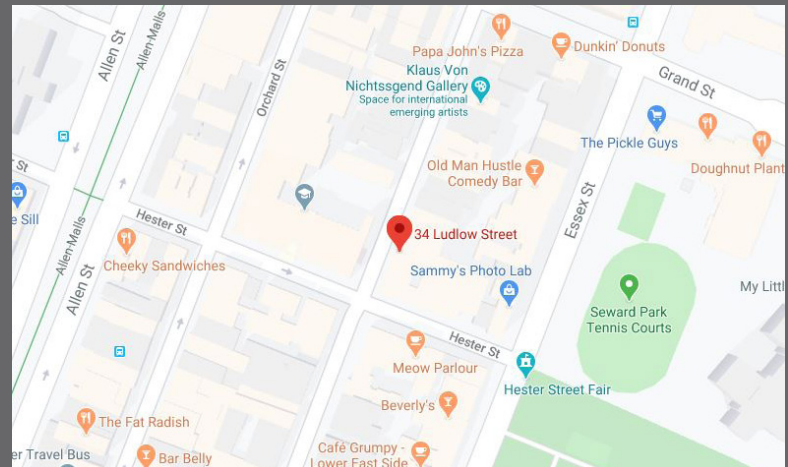
**\$7,000 per month**

#### POSSESSION:

Arranged

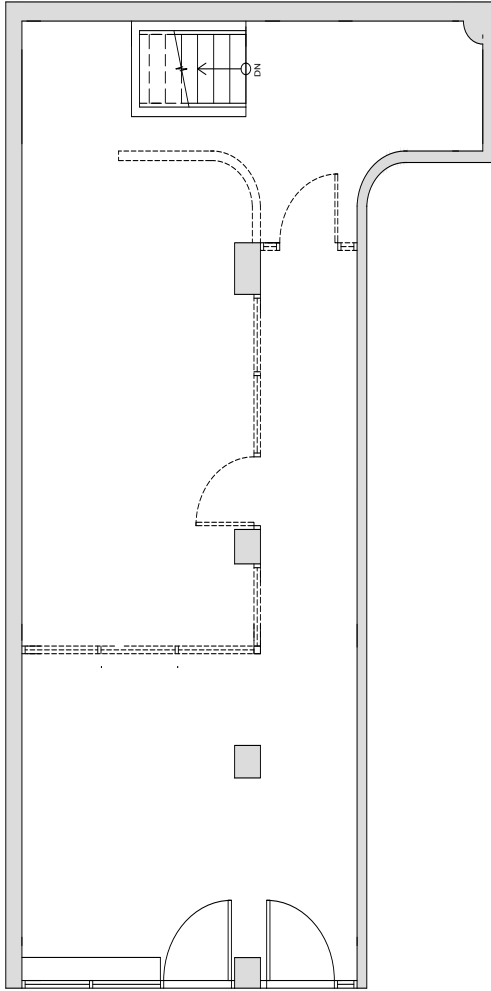
#### USE:

All retail uses accepted.



Located on the corner of Ludlow Street and Hester Street in the Lower East Side, offers access to one of New York's most competitively sought after commercial locations.

## For inquiries contact Zach Levine 646.943.3125



LUDLOW STREET

