



Prime Midtown East Medical Office Opportunity

Medical Office Space Available Immediately Wet Pantry and Private Bathroom in Place Private Backyard

APPROXIMATE SIZE:

500 Sqft - Ground Floor

RENT:

\$2,500 per month

CEILING HEIGHT:

8'

TERM:

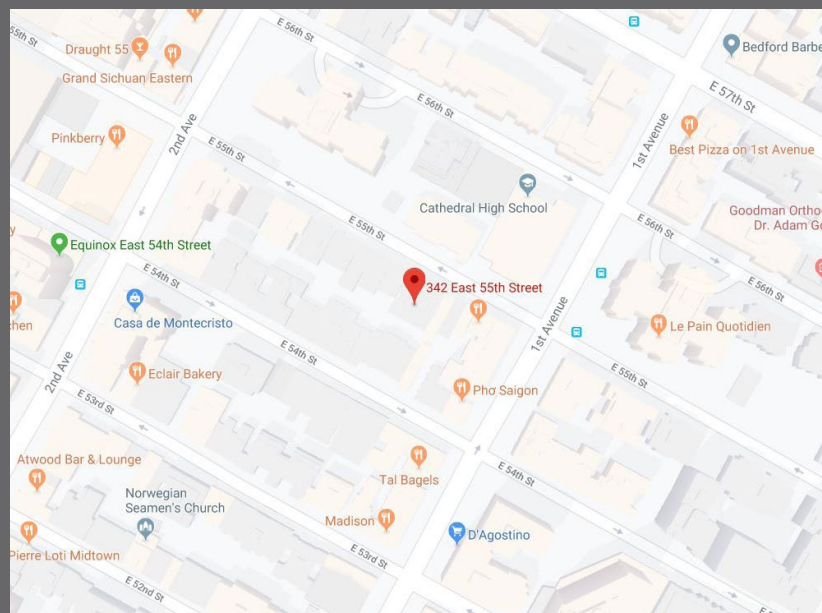
Negotiable

POSSESSION:

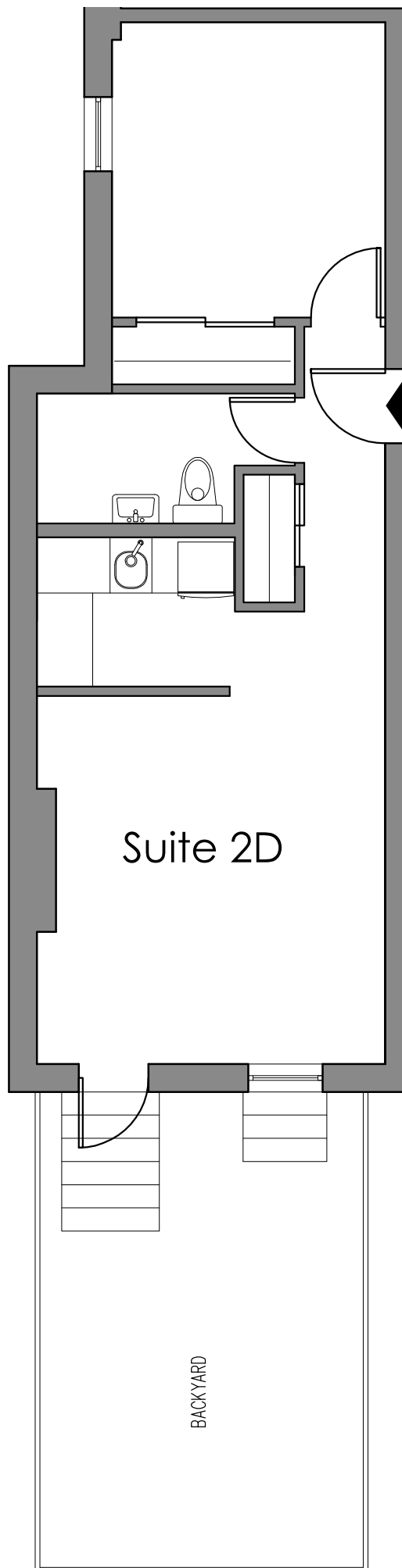
Immediate

USE:

Perfect For: All Medical Office Use



For inquiries contact
Zach Levine 646.943.3125



Suite 2D

BACKYARD