

*Prime Midtown East Medical Office Opportunity*

## Medical Office Space Available Immediately Wet Pantry and Private Bathroom in Place

**APPROXIMATE SIZE:**

350 Sqft - Ground Floor

**RENT:**

**\$2,000 per month**

**CEILING HEIGHT:**

8'

**TERM:**

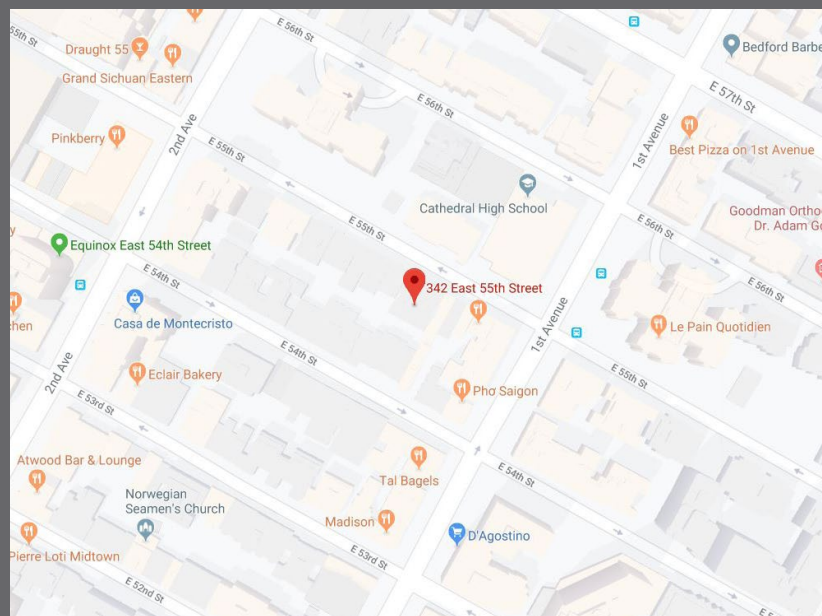
Negotiable

**POSSESSION:**

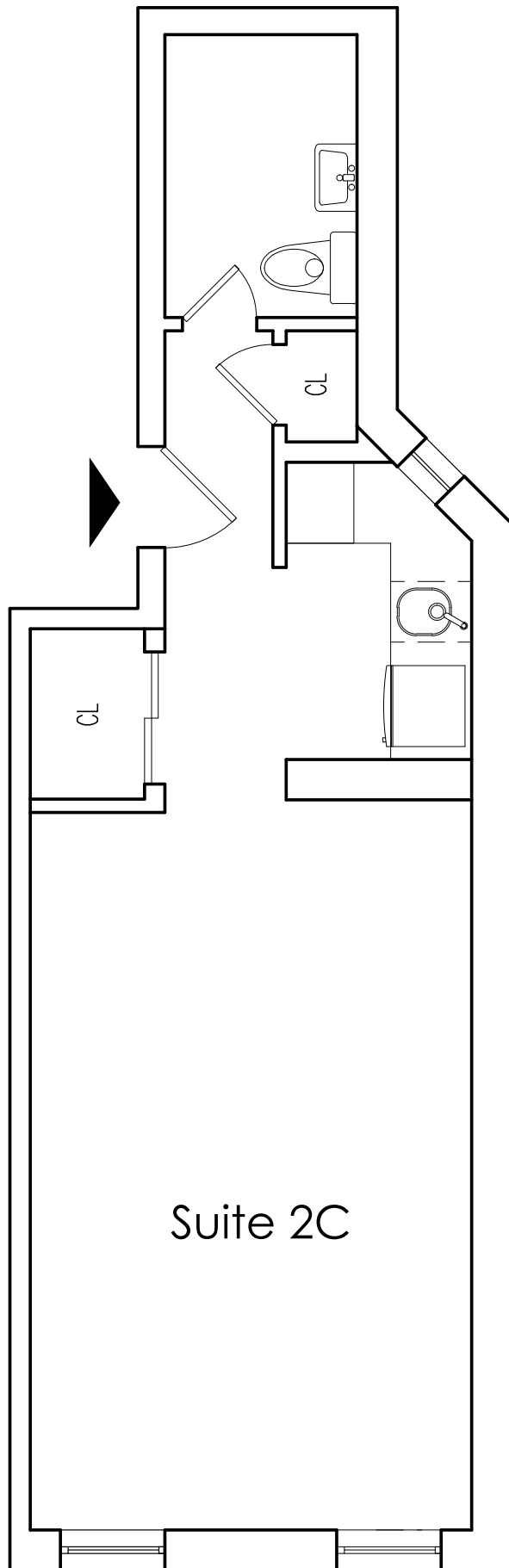
Immediate

**USE:**

Perfect For: All Medical Office Use



For inquiries contact  
**Zach Levine 646.943.3125**



Suite 2C